



A LETTER FROM
FATHER **WOODHOUSE**

“Whoever sows sparingly will reap sparingly and whoever sows bountifully will reap bountifully. Each must do as already determined, without sadness or compulsion, for God loves a cheerful giver.”

– 2 Corinthians 9:6-7



MY DEAR FRIENDS IN CHRIST,

For over twenty years St. Paul Parish has been a part of my life. I attended Mass in our church many years before I entered the seminary, and I always marveled at its beauty. Little did I know at the time that a.) I would be ordained a priest and b.) that I would be assigned here as you pastor.

Being a part of this parish community is a blessing and I am privileged to be here as we begin this important project of repairing and restoring our church so that many more generations can rejoice in the Lord within her walls for years to come.

Members of our finance council and I have discussed the physical needs of the parish, and we have determined that repairing the church roof is the highest priority. After we accomplish this, we hope to repaint the exterior so we can begin to address the interior of the church.

I have been inspired by your generosity since I have been here and I know that, with God's help, we can meet this challenge and provide a beautiful church for future parishioners to grow closer to Our Lord. Our church was built during the Great Depression, and we owe it to our predecessors to repair and restore it to what it once was.

As I have said many times before, when I talk to people who visit our church from out of town, they always comment on two things: the welcoming atmosphere found here and the magnificence of our church, (one person recently told me she thought she was back in Italy!). I am confident that as we welcome more people to our parish, and with the help of Almighty God, our efforts will contribute to keeping our church building magnificent!

We have also started the process of registering the church and the other buildings on our campus with the National Register of Historic Places which, if successful, could provide funds to help us maintain our unique buildings into the future.

I am grateful to God to be your pastor, and I look forward to being with you as we launch this campaign, not only to repair and restore our church, but also to come together as a community working with God to provide a fitting place for us and for those who come after us to Rejoice in the Lord always! (Phil. 4:4).

Yours in Christ,

A handwritten signature in cursive script that reads "Rev. Thomas J. Woodhouse".

Rev. Thomas J. Woodhouse

Pastor



Throughout the history of our parish, our families have made the necessary sacrifices in all aspects of parish life and stewardship to further the mission of Christ. As we continue to move forward and prosper as a parish community, we are confident that this challenge will be met with the same degree of commitment and participation.

“As each one has received a gift, use it to serve one another as good stewards of God’s varied grace.”

1 Peter 4:10



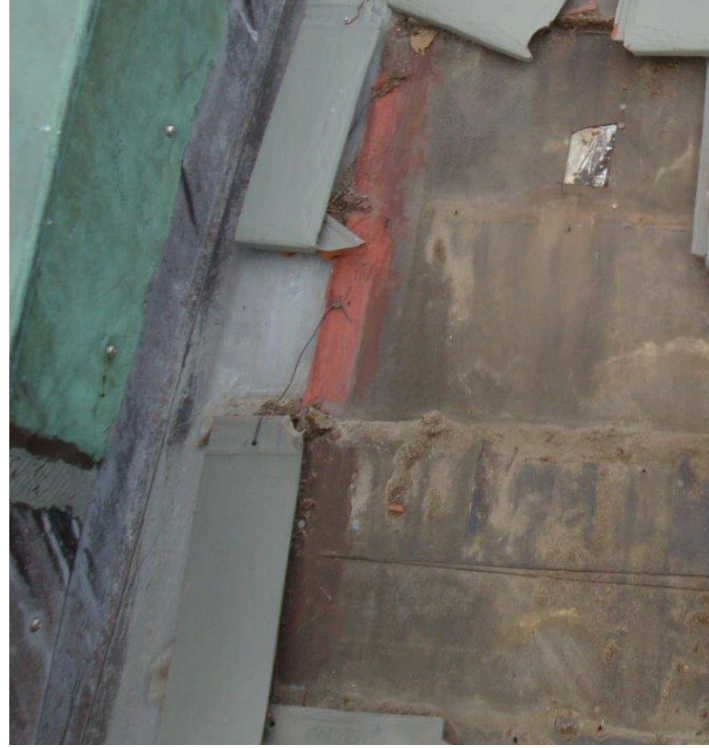


Our CHALLENGE

After much prayerful discernment, study, and discussion among parish leadership committees, parishioners and the Diocese of Providence, it has been decided to undertake a parish-wide capital campaign, **Repair, Restore, Rejoice** to raise the funds necessary to address the roof of the church.

- Repair roof/sub-roof damage and deterioration
- Repair/replace/properly install slate tiles and fasteners to prevent further damage
- Modify gutter system to properly disperse rain/runoff

PROJECTED COST
\$1,200,000





How to Pledge **YOUR SUPPORT**

St. Paul seeks to raise a minimum of \$1.2 million through the efforts of this campaign. Every member of our parish community is integral to our success in reaching this goal; therefore, each family is asked to consider making a pledge to the campaign to the best of their ability.

Each family is asked to prayerfully consider a pledge to be paid over a period of up to three years. Additionally, if a multi-year pledge is made, we kindly request a 10% down payment to assist our parish in beginning these efforts. However, each family is encouraged to participate in whichever way works best, and the 10% down payment, while helpful to the parish in many ways, is optional.

How You Can **GET INVOLVED**

Throughout the **Repair, Restore, Rejoice** Capital Campaign, Father Woodhouse, the campaign committee, and volunteer workers will reach out to fellow parishioners to further communicate our vision and encourage your involvement. Our efforts are aimed at giving all members of our parish family an opportunity to participate.

During this campaign, we are asking everyone who calls St. Paul home to:

1. Pray for the success of the campaign
2. Be an ambassador for our parish by getting involved, enthusiastically sharing this information with fellow parishioners, and encouraging them to get involved
3. Make a sacrificial pledge

Whether you participate by attending a campaign reception, responding at Mass or by mail, or by graciously receiving a call from a fellow parishioner, it is your active involvement that will make this campaign a success.

Opportunities **FOR GIVING**

Participating in our **Repair, Restore, Rejoice** capital campaign signifies more than a mere gesture—it's an affirmation of your dedication to our shared faith and future. We are confident that with your gift, whether it's a pledge spread over time, a one-time donation, an employer-matched contribution, a thoughtful gift of stock, or a strategic distribution from your IRA, you're creating a lasting legacy. Your commitment will not only bolster this campaign's goals, but will beautifully illustrate the power of our unified faith and purpose.

We are Members of a **LARGER FAMILY**

All of us are members of families who help each other in times of need. Here at St Paul, we are also members of a much larger family, our faith community. Now we turn to you, our parish family, for assistance. Each family, in their special way, has been generous to our parish. Even the simple act of registration shows a commitment of faith and an identity with the community. Continuing that spirit of generosity, we request a pledge of financial and prayerful support from all our families. We invite parishioners who call St Paul their spiritual home to take this opportunity to help maintain what past generations have entrusted to us, and in that same spirit, provide for future generations.

*In Deuteronomy 16:10 we are reminded that -
"the measure of your own free will offering should be in proportion to the blessing the Lord has bestowed on you".*



Suggested GIFT PLANS

Total Gift	10% Down Payment	3 Annual Payments	12 Quarterly Payments	36 Monthly Payments	Daily Sacrifice
\$100,000	\$10,000	\$30,000	\$7,500	\$2,500	\$82.19
\$50,000	\$5,000	\$15,000	\$3,750	\$1,250	\$41.09
\$25,000	\$2,500	\$7,500	\$1,875	\$625	\$20.55
\$10,000	\$1,000	\$3,000	\$750	\$250	\$8.22
\$8,000	\$800	\$2,400	\$600	\$200	\$6.58
\$6,000	\$600	\$1,800	\$450	\$150	\$4.93
\$5,000	\$500	\$1,500	\$375	\$125	\$4.11
\$4,000	\$400	\$1,200	\$300	\$100	\$3.29

The gift plans in the chart above are provided as a suggested guideline when considering your pledge. However, gifts of any size are needed and appreciated.

Methods of PLEDGING

Pledges via Check or Online Giving

Complete your pledge card by noting the amount of your pledge and suggested down payment of 10%. Be sure to select your method of payment (Check, Debit/Credit Card, Bank Draft), and frequency of payments (i.e., monthly, quarterly, or annually). You may return the pledge card in the weekly collection, bring it to the parish office or return it by mail.

If paying by check, please make payable to **St. Paul Campaign**. You will be sent payment reminders and a payment envelope in accordance with the plan you choose.



If pledging online, please visit bit.ly/spdonate2024 or scan the QR Code

Gifts of Property, Life Insurance, Annuities, Wills or Bequests

There are different ways to support St. Paul both today and in the years to come via planned giving. Families can make gifts of real estate, personal property, automobiles, life insurance, estate bequests, annuities or charitable remainder trusts. For substantial gifts of property other than marketable securities, the IRS requires an appraisal. For more information contact the parish office.

Gifts of Stock

Make a bigger impact by donating long-term appreciated securities, including stocks, bonds, and mutual funds, directly to the **Repair, Restore, Rejoice** Capital Campaign. Compared with donating cash, or selling your appreciated securities and contributing the after-tax proceeds, you may be able to automatically increase your gift and tax deduction. If you would like to initiate a donation of stocks or other securities, please contact the parish office.

IRA Contributions

An IRA owner, age 70½ or older, can directly transfer tax-free up to \$100,000 per year to an eligible charity. This option can be used for distributions from IRAs, regardless of whether the owners itemize their deductions. Distributions from employer-sponsored retirement plans, including SIMPLE IRAs and simplified employee pension (SEP) plans, are not eligible.

To qualify, the funds must be transferred directly by the IRA trustee to the eligible charity. Distributed amounts may be excluded from the IRA owner's income — resulting in lower taxable income for the IRA owner.

For more information contact the parish office.

If you have any questions about the campaign or making your pledge, please contact the parish office at 401.461.5734



DEAR LORD,
we know that You will give us
everything we need
to do Your will.

We humbly ask You
to bless our capital campaign
and give us the means
to repair our church,
and restore its original beauty
so that we can rejoice
and praise You in it
for many generations to come.

We ask this through
Christ Our Lord.

Amen



THANK YOU!

We would not have come this far in our
campaign without the assistance of a
special group of dedicated people.
Our deepest gratitude extends to those
who have helped along the way.
God Bless you.

St. Paul Catholic Church
One Saint Paul Place
Cranston, RI 02905
401.461.5734

**SCAN
HERE**
for Online
Giving

